

## INSTALLATION GUIDE

# GVS-65, GVS-90 CONCENTRIC VENT TERMINATION KIT

## For Type BH, Class IIA (65°C, PVC) and IIB (90°C, CPVC) Gas Venting Systems

Westlake Pipe & Fittings offers a concentric vent termination kit to be used with our Class IIA (PVC) and Class IIB (CPVC) gas venting systems. This termination kit can be used for either horizontal or vertical vent terminations. Do not use any pipe, fittings, solvent cements or primers from other manufacturers with Westlake Pipe & Fittings products. Substituting components from different manufacturers voids Westlake Pipe & Fittings GVS-65 and GVS-90 certifications.

Westlake Pipe & Fittings GVS-65 and 90 Concentric Vent Termination Kits (CVTK) are certified to ULC S636 for use with GVS-65 and 90 gas venting system components. The GVS-65 and 90 CVTK's must be installed according to CAN/CSA B149.1: Natural Gas and Propane Installation Guide (latest edition), the appliance manufacturers' installation instructions, this installation guide and the Westlake Pipe & Fittings GVS-65 and 90 Installation Guide.

### Each CVTK consists of the following components:

2" Kit:	3" Kit:	4" Kit:
2" Rain Cap	3" Rain Cap	4" Rain Cap
2" Pipe	2½" Pipe	4" Pipe
3" Pipe	4" Pipe	6" Pipe
2" Conc Wye Fitting	3" Conc Wye Fitting	4" Conc Wye Fitting

### Concentric Vent Termination Kit Installation:

- Determine the best location for the termination – see Figures 1 and 2 for horizontal and vertical vent termination installations. For side (horizontal) termination, the following should be considered:
  - CAN/CSA B149.1: Natural Gas and Propane Installation Guide
  - Damage from vapours to plants and shrubs, other equipment and building materials.
  - Possible Damage to the terminal from foreign objects.
  - Wind effects that may cause recirculation of flue products, debris or light snow.
  - Visible vent vapours.
- Cut one 4" diameter hole through the structure for the 2" kit, 5" diameter hole for the 3" kit or 7" diameter hole for the 4" kit.
- Refer to Figure 3 for assembled Concentric Vent Kit dimensions.
- Partially assemble the CVTK. Solvent cement the parts using the procedures in the Westlake Pipe & Fittings GVS-65/90 Installation Guide and as per the instructions below:
  - Solvent cement the Wye Concentric Fitting to the larger diameter kit pipe.
  - Solvent cement the rain cap to the smaller diameter kit pipe.

- Install the Wye Concentric Fitting and pipe assembly through the hole in the structure. For vertical termination, install the parts through the field supplied roof boot/flashing.

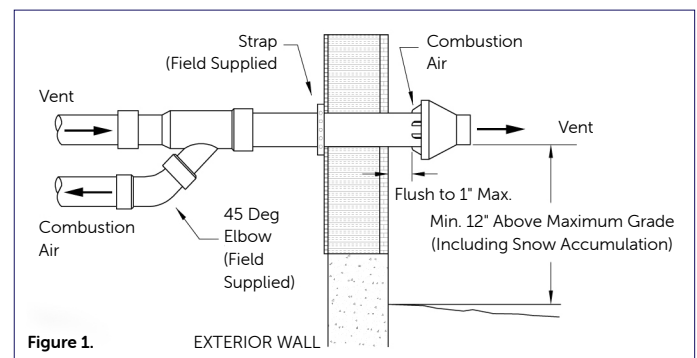
### NOTE:

Do not allow insulation or other materials to accumulate inside the pipe assembly when installing through the structure hole.

- If the assembly is too short to meet the height requirement, the 2 pipes supplied in 2" and 3" kits may be replaced with Westlake Pipe & Fittings PVC IPS SDR26 pipe (for GVS-65 kits) or GVS-90 pipe (for GVS-90 Kits) of the same diameter. The pipe length ("A" dimension on Figure 3) may be extended to a maximum of 63" for 2" kits and 68" for 3" kits.
- Secure the assembly to the structure as shown in Figure 1 or Figure 2, using field supplied support/weatherproofing products.

### NOTE:

- Ensure that straps and supports are installed to prevent movement of the CVTK.
  - Ensure that the termination height is above the roof surface, including anticipated snow levels as shown in Figure 2 for vertical termination.
  - Ensure the termination location clearance dimensions are as shown in Figure 1 for horizontal termination.
- Install the rain cap and the small diameter pipe assembly in the Wye Concentric Fitting and large pipe assembly. Ensure that the small diameter pipe is bottomed out and securely cemented in the Wye Concentric Fitting.
  - Cement the furnace combustion air and vent pipes to the concentric vent termination assembly. See Figure 1 or Figure 2.



INSTALLATION GUIDE

# GVS-65, GVS-90 CONCENTRIC VENT TERMINATION KIT

For Type BH, Class IIA (65°C, PVC) and IIB (90°C, CPVC) Gas Venting Systems

**WARNING**

**Furnaces:** This vent kit is to be used with Category IV condensing furnaces only. DO NOT use with Category I, II or III furnaces. This concentric vent termination kit must be approved for use with any appliance by the appliance manufacturer.

**Water Heaters or Boilers:** Since there is no categorization of these units, this vent kit is only to be used with water heaters or boilers that have flue gas temperature of 65°C (GVS-65) or 90°C (GVS-90) or less. Please consult the installation instructions of the appliance to confirm that this type of vent termination kit is approved.

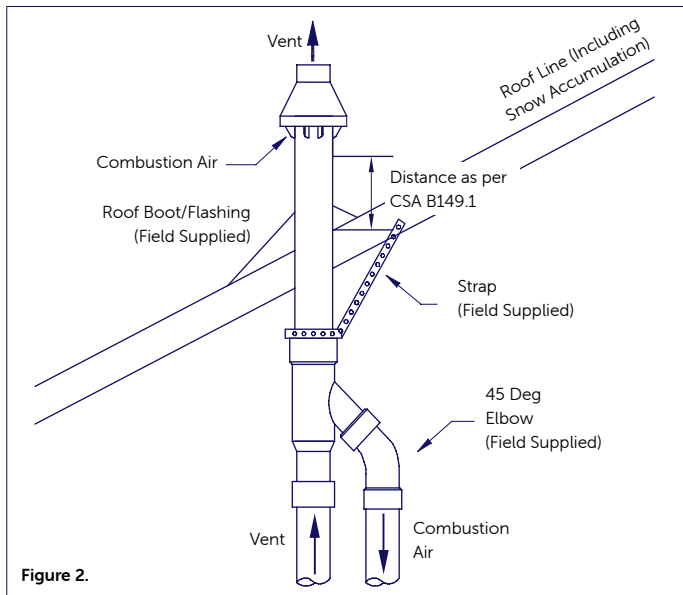


Figure 2.

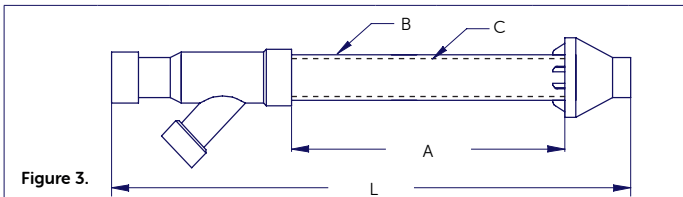


Figure 3.

System	Trade Size	Model	A (in)	B	C	L (in)
GVS-65 (PVC)	2"	52CVKGVS6502	17	3" SDR26	2" SDR26	33
		52CVKGVS6502-28	27			44
		52CVKGVS6502-40	39			56
	3"	52CVKGVS6503	21	4" SDR26	2½" SDR26	39
		52CVKGVS6503-32	31			49
		52CVKGVS6503-44	43			61
4"	52CVKGVS6504	36	6" SDR26	4" SDR26	56	
GVS-90 (CPVC)	3"	52CVKGVSF9003	21	4" GVS-90 Pipe (CPVC)	2½" GVS-90 Pipe (CPVC)	29
		52CVKGVSF9003-32	31			49
		52CVKGVSF9003-44	43			61
	4"	52CVKGVSF9004-36	36	6" GVS-90 (CPVC)	4" GVS-90 (CPVC)	56

**WARNING**

Do not operate the furnace with the rain cap removed, as re-circulation of the flue gases may occur. Water may also collect inside the larger combustion air pipe and flow to the burner enclosure. Failure to follow this warning can result in property and equipment damage, personal injury or death.

**WARNING**

Do not use field-supplied couplings to extend the pipes. Airflow restriction will occur and the furnace pressure switch may cause intermittent operation.

**WARNING**

To avoid bodily injury, fire or explosion, solvent cements and primers MUST be kept away from all ignition sources (i.e. sparks, open flames and excessive heat) as they are combustible liquids. Avoid breathing cement vapours or contact with skin and/or eyes.

**WARNING**

**High Voltage** – Disconnect ALL electrical power and shut off gas supply before servicing or installing. Multiple power sources may be present. Failure to do so may cause property damage, personal injury or death.

**WARNING**

If the information in these instructions is not followed exactly, a fire or explosion may result causing property damage, personal injury or death.

Do not store or use gasoline or other flammable vapours and liquids in the vicinity of this or any other appliance.

**What to do if you smell gas:**

- Do not try to light any appliance.
- Do not touch any electrical switch; do not use a phone in your building.
- Immediately call your gas supplier from a neighbour's phone. Follow the gas supplier's instructions.
- If you cannot reach your gas supplier, call the fire department.
- Installation and Service must be performed by a qualified installer, service agency or the gas supplier.

**WARNING**

To avoid property damage, personal injury or death due to explosion or fire, install a gas detecting warning device. Since the odourant in propane gas can be reduced by iron oxide (rust), a gas detecting warning device is the only reliable method to detect propane gas leaks.

**WARNING**

Property damage, furnace malfunction, personal injury or death may result from improper installation or maintenance performed by untrained personnel. Installation must conform to local codes, with codes of the country having jurisdiction. Call your installing dealer or other qualified service companies to perform the installation or maintenance inspection.

**WARNING**

To avoid the risk of property damage, personal injury or fire, shut off gas supply first, then disconnect the electrical supply before proceeding with the kit installation.