



MUNICIPAL

Backwater Valves & Terminal Backwater Valves

To protect against sewer backups

Westlake
Pipe & Fittings

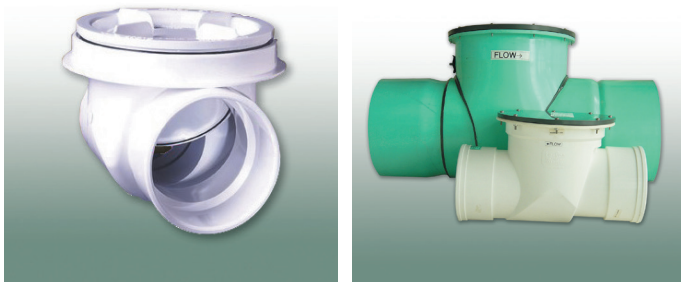
Advantages of Backwater Valves include:

- Protects against sewer backups.
- Ensures a one-way flow in storm and sanitary lines.
- Equipped with a free hinged flapper that opens and closes with minimal head flow.
- Access lid allows for quick inspection and cleaning.
- Leak-free neoprene gaskets on both flapper and access lid.

Backwater Valves & Terminal Backwater Valves

ABOUT BACKWATER VALVES & TERMINAL BACKWATER VALVES

Backwater Valves are designed to protect against sewer backups. Backups can be caused by blockages, infiltration of groundwater into the sewer or higher than anticipated flows.



Backwater Valves ensure one-way flow in storm and sanitary sewer lines where backflow could be a problem. In a municipal Right of Way, we offer two types of Backwater Valves, in-line and terminal. Each Backwater Valve is equipped with a flapper that allows unrestricted flow. The flapper remains closed protecting against backflow and opens only when there is flow from the system.

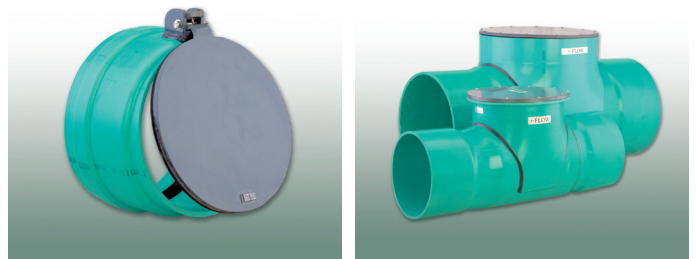
The flapper is free-hinged allowing it to open and close easily with minimal head flow. The Backwater Valve comes with an access lid that can be easily removed for inspection and cleaning of the valve. Both the flapper and the access lid have leak-free neoprene gaskets.

The direction of flow is indicated by an arrow on the Backwater Valve to assist in proper installation. Backwater Valves are intended for horizontal use in drainage systems. The quick-action flapper checks backflow immediately, reducing the risk of backups.

Backwater Valves are manufactured to fit with 75mm - 600mm (3" - 24") IPS pipe and 100mm - 900mm (4" - 36") SDR35 sewer pipe. Backwater Valves are available with standard solvent weld or gasketed bell ends.

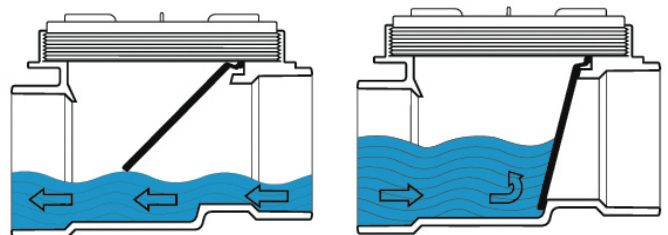
TERMINAL BACKWATER VALVES

Terminal Backwater Valves are used at the end of the line or on the overflow from the sanitary sewer pumping station. They are available for 75mm - 600mm (3" - 24") IPS pipe and 100mm - 900mm (4" - 36") SDR 35 sewer and they have either gasketed or solvent weld bell ends.



HOW A BACKWATER VALVE WORKS:

Backwater Valve is open - allowing waste waters to flow to sewers.
Backwater Valve is closed - protecting basement from sewer backups.



CERTIFICATIONS

Backwater Valves are third-party tested to meet CSA/CAN3 B70-M86.