

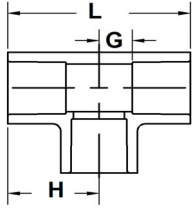


DIMENSIONAL CATALOG

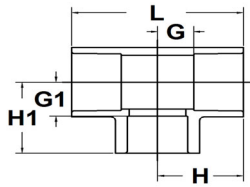
SCH 80 - CPVC

Pressure Fittings

SCH 80 CPVC



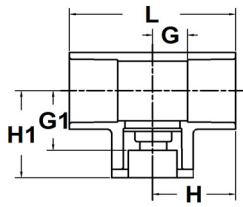
Tee				
Part No	Size (in)	L	H	G
9801-005	½	2 13/16	1 3/8	1/2
9801-007	¾	3 1/8	1 9/16	9/16
9801-010	1	3 3/4	1 7/8	3/4
9801-012	1¼	4 11/32	2 5/32	15/16
9801-015	1½	4 13/16	2 3/8	1
9801-020	2	5 9/16	2 3/4	1 1/4
9801-025	2½	6 1/2	3 1/4	1 1/2
9801-030	3	7 13/32	3 11/16	1 13/16
9801-040	4	9 5/8	4 13/16	2 1/2
9801-060	6	13	6 1/2	3 1/2
9801-080	8	17 1/4	8 5/8	4 17/32



Reducing Tee						
Part No	Size (in)	L	H	H1	G	G1
9801-072*	½ x ¼	2 19/25	1 3/8	1 5/8	1/2	1
9801-073*	½ x ⅜	2 19/25	1 3/8	1 5/8	1/2	8/9
9801-074*	½ x ¾	2 3/4	1 3/8	1 40/63	1/2	1 1/99
9801-101	¾ x ¾ x ½	3 1/32	1 8/16	1 10/16	12/25	46/63
9801-130	1 x 1 x ½	3 5/16	1 5/8	1 5/8	1/2	46/63
9801-131	1 x 1 x ¾	3 3/4	1 14/16	2 15/16	37/50	1 29/32
9801-166*	1¼ x 1¼ x ½	4 1/4	2 1/8	2 1/4	7/8	1 13/32
9801-209*	1½ x 1½ x ½	4 3/4	2 3/8	2 11/32	1	1 15/32
9801-211	1½ x 1½ x 1	4 7/9	2 40/93	2 5/8	1.0625	1 19/32
9801-249	2 x 2 x 1	5 5/9	2 6/8	3 1/8	1 1/4	1 31/32
9801-251	2 x 2 x 1½	5 3/32	2 14/25	2 20/29	1 1/16	1 2/7
9801-289*	2½ x 2½ x 1	6 1/2	3 1/4	3 17/32	1 1/2	2 3/8
9801-291	2½ x 2½ x 1½	6 1/2	3 1/4	3 14/16	1 1/2	2 3/8
9801-292	2½ x 2½ x 2	6.51	3 1/4	3.6875	1 1/2	2 5/32
9801-334	3 x 3 x ¾	5 2/16	2 19/32	3 2/16	23/32	2
9801-335	3 x 3 x 1	5 4/16	2 16/25	3 9/32	19/25	2 3/32
9801-338	3 x 3 x 2	6 7/16	3 7/32	3 13/32	1 9/31	1 67/77
9801-420	4 x 4 x 2	7 3/16	3 19/32	3 29/32	1 9/32	2 19/50
9801-421*	4 x 4 x 2½	8 5/16	4 5/32	4 17/32	1 7/8	2 25/32
9801-422	4 x 4 x 3	8 4/16	4 5/32	4 22/71	1 67/77	2 13/32
9801-525*	6 x 6 x 1	9 25/32	4 7/8	5 21/32	1 7/8	4 17/32
9801-526*	6 x 6 x 1¼	9 25/32	4 7/8	5 21/32	1 7/8	4 3/8
9801-527*	6 x 6 x 1½	9 25/32	4 7/8	5 21/32	1 7/8	4 9/32
9801-528*	6 x 6 x 2	9 25/32	4 7/8	5 21/32	1 7/8	4 1/8
9801-529*	6 x 6 x 2½	9 25/32	4 7/8	5 21/32	1 7/8	3 29/32
9801-530	6 x 6 x 3	13	6 1/2	7	2 11/32	5 1/16
9801-532	6 x 6 x 4	13 1/16	6 17/32	6 17/21	3 25/51	4 1/2
9801-585	8 x 8 x 6	15 3/16	7 19/32	7 17/32	3 19/32	4 17/32

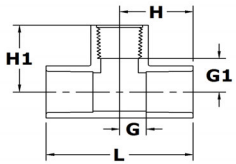
* Assembled from two molded components

SCH 80 CPVC



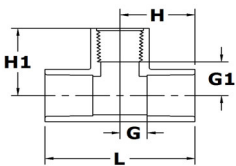
Hotel Transition Tee

Part No	Size (in)	L	H	H1	G	G1
9801-334CTS	3 IPS x 3 IPS x 3/4 CTS	5 1/8	2 9/16	3 1/4	11/16	2 1/2
9801-335CTS	3 IPS x 3 IPS x 1 CTS	5 9/32	2 5/8	3 7/16	3/4	2 17/32



Tee

Part No	Size (in)	L	H	H1	G	G1
9802-005	1/2	2 3/4	1 3/8	1 5/32	1/2	7/16
9802-007	3/4	3 5/8	1 25/32	1 3/4	3/4	19/32
9802-010	1	3 3/4	1 7/8	1 7/8	3/4	11/16

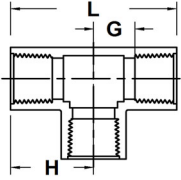


Reducing Tee

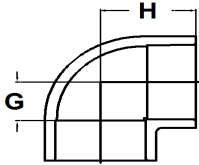
Part No	Size (in)	L	H	H1	G	G1
9802-072*	1/2 x 1/4	2 3/4	1 3/8	1 9/16	1/2	3/4
9802-166*	1 1/4 x 1/2	4 1/4	2 1/8	2 5/16	7/8	1 7/16
9802-167*	1 1/4 x 3/4	4 1/4	2 1/8	2 9/32	7/8	1 13/32
9802-209*	1 1/2 x 1/2	4 3/4	2 3/8	2 9/32	1	1 7/16
9802-210*	1 1/2 x 3/4	4 3/4	2 3/8	2 7/16	1	1 17/32
9802-248*	2 x 3/4	5 1/2	2 3/4	2 11/16	1 1/4	1 25/32
9802-249*	2 x 1	5	2 1/2	2 15/16	1	2
9802-250*	2 x 1 1/4	5 1/2	2 3/4	3 1/16	1 1/4	2 1/16
9802-292*	2 1/2 x 2	6 1/2	3 1/4	3 5/8	1 1/2	2 1/16
9802-335*	3 x 1	6 1/4	3 1/8	3 5/8	1 1/4	2 3/8
9802-336*	3 x 1 1/4	6 1/4	3 1/8	3 5/8	1 1/4	2 5/8
9802-339*	3 x 2 1/2	7 13/32	3 11/16	4 3/32	1 13/16	2 7/16
9802-416*	4 x 3/4	9 1/8	4 9/16	4 1/2	2 5/16	3 5/8
9802-417*	4 x 1	9 1/8	4 9/16	4 7/16	2 5/16	3 3/16
9802-418*	4 x 1 1/4	9 1/8	4 9/16	4 1/2	2 5/16	3 1/2
9802-420*	4 x 2	9 1/8	4 9/16	4 7/16	2 5/16	3 7/16
9802-421*	4 x 2 1/2	8 5/16	4 5/32	4 21/32	1 7/8	2 31/32
9802-422*	4 x 3	9 1/8	4 9/16	5 7/16	2 5/16	3 9/16
9802-528*	6 x 2	10 25/32	5 3/8	5 3/4	2 11/32	4 11/16
9802-529*	6 x 2 1/2	10 25/32	5 3/8	5 3/4	2 3/8	4 3/32
9802-530*	6 x 3	13	6 13/32	7 1/16	3 1/2	5 1/4
9802-532*	6 x 4	13	6 1/2	7	3 1/2	4 3/4

* Assembled from two molded components

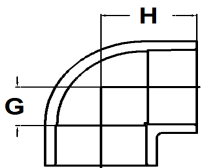
SCH 80 CPVC



Tee				
Part No	Size (in)	L	H	G
9805-003	3/8	2	1	3/8
9805-005	1/2	2 25/32	1 3/8	13/32
9805-007	3/4	2 9/16	1 9/32	9/16
9805-010	1	3 3/4	1 7/8	5/8
9805-012	1 1/4	4 11/32	2 5/32	25/32
9805-015	1 1/2	4 27/32	2 3/8	7/8
9805-020	2	4 17/32	2 1/4	1 5/16
9805-025	2 1/2	5 3/4	2 7/8	1 13/32
9805-030	3	6 15/16	3 15/32	1 7/8
9805-040	4	8 5/32	4 1/16	2 5/16

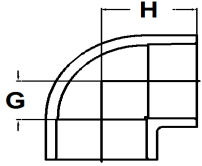


90° Ell			
Part No	Size (in)	H	G
9806-002	1/4	15/16	5/16
9806-005	1/2	1 3/8	1/2
9806-007	3/4	1 9/16	9/16
9806-010	1	1 13/16	11/16
9806-012	1 1/4	2 1/8	7/8
9806-015	1 1/2	2 7/16	1 1/16
9806-020	2	2 25/32	1 3/8
9806-025	2 1/2	3 11/16	1 1/2
9806-030	3	3 11/16	1 13/16
9806-040	4	4 19/32	2 5/16
9806-060	6	6 15/32	3 7/16
9806-080	8	8 17/32	4 1/2



Reducing 90° Ell			
Part No	Size (in)	H	G
9806-072*	1/2 x 1/4	1 5/8	1
9806-073*	1/2 x 3/8	1 5/8	7/8
9806-101*	3/4 x 1/2	1 29/32	1 1/32
9806-130*	1 x 1/2	2 1/8	1 1/4
9806-131*	1 x 3/4	2 3/32	1 3/32
9806-166*	1 1/4 x 1/2	2 13/32	1 17/32
9806-167*	1 1/4 x 3/4	2 3/8	1 3/8
9806-168*	1 1/4 x 1	2 3/8	1 1/4
9806-209*	1 1/2 x 1/2	2 25/32	1 29/32
9806-210*	1 1/2 x 3/4	2 25/32	1 25/32
9806-211*	1 1/2 x 1	2 25/32	1 21/32
9806-212*	1 1/2 x 1 1/4	2 25/32	1 17/32
9806-247*	2 x 1/2	3 5/32	2 9/32
9806-248*	2 x 3/4	3 5/32	2 5/32
9806-249*	2 x 1	3 5/32	2 1/32

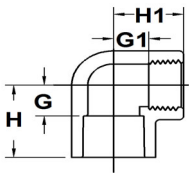
SCH 80 CPVC



90° Ell (con't)

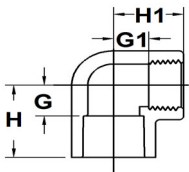
Part No	Size (in)	H	G
9806-250	2 x 1¼	3 5/32	1 29/32
9806-251*	2 x 1½	3 5/32	1 25/32
9806-289*	2½ x 1	3 17/32	2 13/32
9806-290*	2½ x 1¼	3 17/32	2 9/32
9806-291*	2½ x 1½	3 17/32	2 5/32
9806-292*	2½ x 2	3 17/32	2 1/32
9806-335*	3 x 1	3 31/32	2 27/32
9806-336*	3 x 1¼	3 31/32	2 23/32
9806-337*	3 x 1½	3 31/32	2 19/32
9806-338*	3 x 2	3 31/32	2 15/32
9806-339*	3 x 2½	3 31/32	2 7/32
9806-420*	4 x 2	5 1/8	3 5/8
9806-422*	4 x 3	5 3/32	3 7/32
9806-528*	6 x 2	6 13/16	5 25/32
9806-530*	6 x 3	6 13/16	5 13/32
9806-532*	6 x 4	6 13/16	5 1/32
9806-535*	8 x 6	8 25/32	6 19/32

* Assembled from two molded components



90° Ell

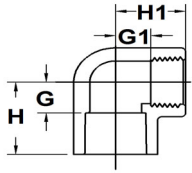
Part No	Size (in)	H	H1	G	G1
9807-005	½	1 3/8	1 3/8	1/2	1/2
9807-007	¾	1 3/4	1 3/4	3/4	3/4
9807-010	1	1 7/8	1 7/8	3/4	3/4
9807-012	1¼	2 3/16	2 5/32	3/4	13/16
9807-015	1½	2 7/16	2 7/16	1 1/16	7/8
9807-020	2	2 3/4	2 1/4	1 1/4	1 9/32



90° Ell

Part No	Size (in)	H	H1	G	G1
9807-072	½ x ¼	1 3/8	1 9/16	1/2	27/32
9807-101	¾ x ½	1 9/16	1 27/32	9/16	1 1/16
9807-130	1 x ½	1 13/16	2 1/8	11/16	1 1/4
9807-131	1 x ¾	1 13/16	2 1/8	11/16	1 5/16
9807-166	1¼ x ½	2 1/8	2 7/16	7/8	1 3/4
9807-167	1¼ x ¾	2 1/8	2 7/16	7/8	1 3/4
9807-168	1¼ x 1	2 1/8	2 13/32	7/8	1 17/32
9807-209	1½ x ½	2 3/8	2 29/32	1 5/32	2 7/32
9807-210	1½ x ¾	2 3/8	2 27/32	1 5/32	1 31/32
9807-211	1½ x 1	2 3/8	2 27/32	1 5/32	2
9807-212	1½ x 1¼	2 3/8	2 27/32	1 5/32	1 15/16
9807-247	2 x ½	2 3/4	3 9/32	1 13/32	2 19/32
9807-248	2 x ¾	2 3/4	3 9/32	1 13/32	2 15/32

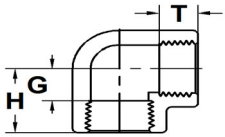
SCH 80 CPVC



90° Ell (con't)

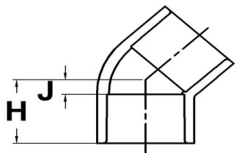
Part No	Size (in)	H	H1	G	G1
9807-249	2 x 1	2 3/4	3 7/32	1 13/32	2 1/16
9807-250	2 x 1 1/4	2 3/4	3 7/32	1 13/32	2 5/16
9807-251	2 x 1 1/2	2 3/4	3 7/32	1 13/32	2 5/16
9807-292	2 1/2 x 2	3 1/4	3 5/8	1 1/2	2 5/32
9807-338	3 x 2	3 23/32	4 3/32	1 13/16	3 1/32
9807-339	3 x 2 1/2	3 23/32	4 3/32	1 13/16	2 1/2
9807-420	4 x 2	4 9/16	5 19/32	2 19/32	4 5/8
9807-422	4 x 3	4 9/16	5 7/32	2 19/32	2 19/32
9807-532	6 x 4	6 1/2	7 1/16	3 1/2	5 1/4

* Assembled from two molded components



90° Ell

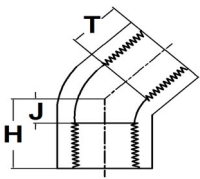
Part No	Size (in)	H	G	T
9808-003	3/8	1	3/8	5/8
9808-005	1/2	1 3/8	1/2	7/8
9808-007	3/4	1 3/4	3/4	1
9808-010	1	1 5/8	23/32	7/8
9808-012	1 1/4	2 5/32	25/32	1 3/8
9808-015	1 1/2	2 7/16	15/16	1 1/2
9808-020	2	2 9/32	1 5/16	31/32



45° Ell

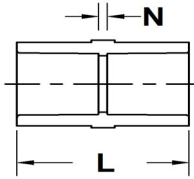
Part No	Size (in)	H	J
9817-002	1/4	13/16	3/16
9817-005	1/2	1 1/8	1/4
9817-007	3/4	1 5/16	5/16
9817-010	1	1 1/2	3/8
9817-012	1 1/4	1 23/32	15/32
9817-015	1 1/2	1 27/32	7/16
9817-020	2	2 1/8	5/8
9817-025	2 1/2	2 1/2	3/4
9817-030	3	2 23/32	27/32
9817-040	4	3 1/4	1
9817-060	6	4 15/16	1 15/16
9817-080	8	6 1/8	2 1/32

SCH 80 CPVC



45° Ell

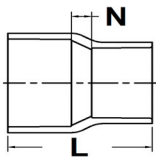
Part No	Size (in)	H	J	T
9819-003	3/8	13/16	3/16	19/32
9819-005	1/2	1 1/16	5/16	3/4
9819-007	3/4	1 1/8	5/16	13/16
9819-010	1	1 11/32	13/32	15/16
9819-012	1 1/4	1 13/32	13/32	1
9819-015	1 1/2	1 1/2	1/2	1 1/32
9819-020	2	1 3/4	11/16	1 1/16



Coupling

Part No	Size (in)	L	N	Body Dia.
9829-002	1/4	1 3/8	1/8	13/16
9829-005	1/2	1 27/32	1/8	1 7/32
9829-007	3/4	2 1/8	1/8	1 7/16
9829-010	1	2 3/8	1/8	1 3/4
9829-012	1 1/4	2 25/32	1/4	2 7/32
9829-015	1 1/2	3 1/16	1/4	2 17/32
9829-020	2	3 9/32	1/4	3
9829-025	2 1/2	3 3/4	1/4	3 5/8
9829-030	3	4	1/4	4 11/32
9829-040	4	4 23/32	1/4	5 7/32
9829-060	6	6 1/4	1/4	7 19/32
9829-080	8	9 11/32	1/4	9 3/4

Body diameter measured across hex flats (if applicable)

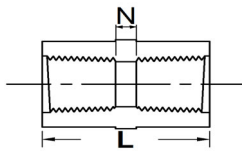


Reducer Coupling

Part No	Size (in)	L	N
9829-072*	1/2 x 1/4	2 3/32	19/32
9829-101	3/4 x 1/2	2 1/8	1/8
9829-130	1 x 1/2	2 5/32	1/8
9829-131	1 x 3/4	2 1/4	1/8
9829-166*	1 1/4 x 1/2	2 7/8	3/4
9829-168	1 1/4 x 1	2 11/16	3/16
9829-212	1 1/2 x 1 1/4	2 3/4	1/8
9829-251	2 x 1 1/2	3 3/32	1/8
9829-290*	2 1/2 x 1 1/4	4 5/32	1 7/16
9829-291*	2 1/2 x 1 1/2	4 5/32	2 25/32
9829-338	3 x 2	3 5/8	3/16
9829-422	4 x 3	4 3/8	1/4
9829-528*	6 x 2	6 17/32	5 1/32
9829-532	6 x 4	10 1/4	3 1/2
9829-585	8 x 6	9 3/32	2 1/16

* Assembled from two molded components

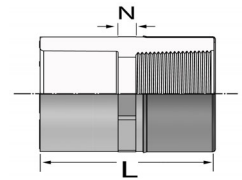
SCH 80 CPVC



Coupling

Part No	Size (in)	L	N	Body Dia.
9830-003	$\frac{3}{8}$	1 5/16	1/8	1 1/16
9830-005	$\frac{1}{2}$	2	1/4	1 11/32
9830-007	$\frac{3}{4}$	2 1/4	1/4	1 17/32
9830-010	1	2 1/2	1/4	1 7/8
9830-012	1 1/4	2 25/32	1/4	2 3/16
9830-015	1 1/2	3 1/32	1/4	2 1/2
9830-020	2	3 9/32	1/4	3

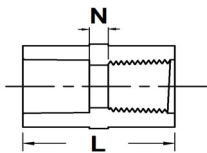
Body diameter measured across hex flats (if applicable)



Coupling (Special Reinforced)

Part No	Size (in)	L	N	Body Dia.
9830-005SR	$\frac{1}{2}$	2	1/4	1 11/32
9830-007SR	$\frac{3}{4}$	2 1/4	1/4	1 17/32
9830-010SR	1	2 1/2	1/4	1 7/8
9830-012SR	1 1/4	2 25/32	1/4	2 3/16
9830-015SR	1 1/2	3 1/32	1/4	2 1/2
9830-020SR	2	3 9/32	1/4	3

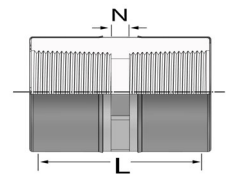
Body diameter measured across hex flats (if applicable)



Female Adapter

Part No	Size (in)	L	N	Body Dia.
9835-002	$\frac{1}{4}$	1 7/16	1/8	31/32
9835-005	$\frac{1}{2}$	2	1/4	1 5/16
9835-007	$\frac{3}{4}$	2 1/4	1/4	1 9/16
9835-010	1	2 1/2	1/4	1 27/32
9835-012	1 1/4	2 25/32	1/4	2 7/32
9835-015	1 1/2	3 1/32	1/4	2 17/32
9835-020	2	3 9/32	1/4	3
9835-025	2 1/2	3 11/32	1/4	3 19/32
9835-030	3	3 13/16	3/16	4 5/16
9835-040	4	4 9/32	1/4	5 7/16

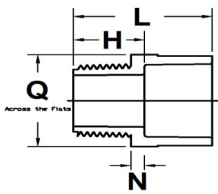
Body diameter measured across hex flats (if applicable)



Female Adapter (Special Reinforced)

Part No	Size (in)	L	N	Body Dia.
9835-005SR	$\frac{1}{2}$	2	1/4	1 5/16
9835-007SR	$\frac{3}{4}$	2 1/4	1/4	1 9/16
9835-010SR	1	2 1/2	1/4	1 27/32
9835-012SR	1 1/4	2 25/32	1/4	2 7/32
9835-015SR	1 1/2	3 1/32	1/4	2 17/32
9835-020SR	2	3 9/32	1/4	3

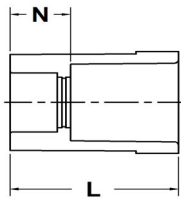
SCH 80 CPVC



Male Adapter

Part No	Size (in)	L	N	H	Q
9836-005	½	1 7/8	1/4	1	1 3/16
9836-007	¾	2 1/32	1/4	1	1 7/16
9836-010	1	2 11/32	1/4	1 7/32	1 3/4
9836-012	1¼	2 9/16	5/16	1 5/16	2 1/8
9836-015	1½	2 3/4	5/16	1 11/32	2 3/8
9836-020	2	2 29/32	5/16	1 3/8	2 7/8
9836-025	2½	3 11/16	5/16	1 15/16	3 1/2
9836-030	3	3 15/16	3/8	2	4 3/16
9836-040	4	4 13/32	3/8	2 3/32	5 7/32

Dimension Q is body diameter (includes hex feature measured across flats)



Reducer Bushing (Flush Style)

Part No	Size (in)	L	N	Hex O.D.
9837-052	⅜ x ¼	31/32	5/16	13/16
9837-072	½ x ¼	1 1/8	7/16	31/32
9837-073	½ x ⅜	1 3/16	13/32	7/8
9837-101	¾ x ½	1 1/16	3/16	1 3/32
9837-130	1 x ½	1 7/16	17/32	1 11/32
9837-131	1 x ¾	1 1/4	1/4	1 11/32
9837-166	1¼ x ½	1 9/16	21/32	1 7/8
9837-167	1¼ x ¾	1 9/16	17/32	1 7/8
9837-168	1¼ x 1	1 19/32	7/16	1 27/32
9837-209	1½ x ½	1 11/16	25/32	2 1/32
9837-210	1½ x ¾	1 11/16	21/32	2 1/8
9837-211	1½ x 1	1 23/32	5/8	2 1/16
9837-212	1½ x 1¼	1 11/16	7/16	2 1/16
9837-247	2 x ½	1 13/16	15/16	2 1/2
9837-248	2 x ¾	1 13/16	23/32	2 1/2
9837-249	2 x 1	1 13/16	25/32	2 1/2
9837-250	2 x 1¼	1 13/16	9/16	2 19/32
9837-251	2 x 1½	1 27/32	13/32	2 7/16
9837-287*	2½ x ½	2 5/16	1 7/16	2 15/16
9837-288*	2½ x ¾	2 1/32	1 5/16	2 15/16
9837-289	2½ x 1	2 5/8	1 1/2	3
9837-291	2½ x 1½	2 1/4	23/32	3
9837-292	2½ x 2	2 3/16	21/32	2 31/32
9837-337	3 x 1½	2 7/16	15/16	3 3/4
9837-338	3 x 2	2 1/4	3/4	3 9/16
9837-339	3 x 2½	2 9/32	17/32	3 9/16
9837-415*	4 x ½	2 25/32	1 29/32	4 19/32
9837-420	4 x 2	2 11/16	1 5/32	4 9/16
9837-421	4 x 2½	3 1/8	1 3/8	4 25/32
9837-422	4 x 3	2 3/4	25/32	4 3/4

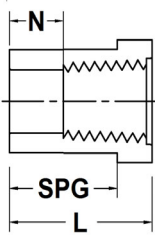
SCH 80 CPVC

Reducer Bushing (Flush Style) con't.

Part No	Size (in)	L	N	Hex O.D.
9837-524*	6 x ¾	3 17/32	2 17/32	6 23/32
9837-525*	6 x 1	3 17/32	2 13/32	6 23/32
9837-526*	6 x 1¼	3 17/32	2 9/32	6 23/32
9837-527*	6 x 1½	3 17/32	2 5/32	6 23/32
9837-529*	6 x 2½	3 9/16	1 25/32	6 23/32
9837-532	6 x 4	3 1/2	1 1/4	6 3/4
9837-580*	8 x 3	5 3/32	3 7/32	8 23/32
9837-582*	8 x 4	5 3/32	2 27/32	8 23/32
9837-585	8 x 6	4 21/32	1 9/16	9

* Assembled from two molded components

Hex outside diameter measured across flats

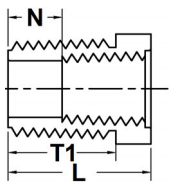


Reducer Bushing (Flush Style)

Part No	Size (in)	L	N	SPG	Hex O.D.
9838-052	⅜ x ¼	1 1/32	13/32	25/32	
9838-072	½ x ¼	1 5/32	1/2	25/32	
9838-073	½ x ⅜	1 1/4	19/32	7/8	
9838-101	¾ x ½	1 1/32	9/32	25/32	
9838-128*	1 x ¼	1 5/8	7/8	1 3/16	1 13/32
9838-130	1 x ½	1 1/4	1/2	1	
9838-131	1 x ¾	1 1/4	7/16	1	
9838-168	1¼ x 1	1 9/16	9/16	1 1/4	
9838-209	1½ x ½	1 11/16	15/16	1 13/32	
9838-210	1½ x ¾	1 11/16	7/8	1 3/8	
9838-211	1½ x 1	1 5/8	19/32	1 5/16	
9838-212	1½ x 1¼	1 25/32	15/32	1 15/32	
9838-247	2 x ½	1 13/16	1 1/16	1 17/32	
9838-248	2 x ¾	1 13/16	1	1 1/2	
9838-249	2 x 1	1 25/32	13/16	1 17/32	
9838-250	2 x 1¼	1 25/32	25/32	1 17/32	
9838-251	2 x 1½	1 25/32	11/32	1 1/2	
9838-288*	2½ x ¾	2 5/16	1 17/32	1 25/32	2 31/32
9838-292	2½ x 2	2 1/8	1 1/16	1 27/32	
9838-334*	3 x ¾	2 7/16	1 21/32	1 29/32	3 19/32
9838-338	3 x 2	2 9/32	1 5/16	1 29/32	
9838-339	3 x 2½	2 3/8	13/16	2	
9838-420	4 x 2	2 25/32	1 21/32	2 11/32	
9838-421*	4 x 2½	2 29/32	1 5/16	2 1/4	4 19/32
9838-422	4 x 3	2 3/4	1	2 11/32	
9838-528*	6 x 2	3 21/32	2 19/32	3 1/32	6 23/32

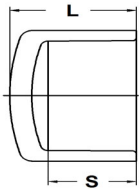
* Assembled from two molded components

SCH 80 CPVC



Reducer Bushing (Flush Style)

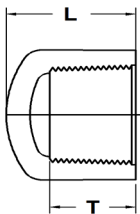
Part No	Size (in)	L	N	T1
9839-101	3/4 x 1/2	1	5/16	11/16
9839-130	1 x 1/2	1 7/16	21/32	1
9839-131	1 x 3/4	1 1/8	3/8	25/32
9839-166	1 1/4 x 1/2	1 3/8	9/16	1 1/32
9839-167	1 1/4 x 3/4	1 5/16	1/2	29/32
9839-168	1 1/4 x 1	1 11/32	7/16	15/16
9839-210	1 1/2 x 3/4	1 11/32	17/32	1 1/32
9839-211	1 1/2 x 1	1 11/32	3/8	1
9839-212	1 1/2 x 1 1/4	1 7/16	7/16	1 1/32
9839-249	2 x 1	1 7/16	7/16	1 1/32
9839-250	2 x 1 1/4	1 7/16	7/16	1 1/32
9839-251	2 x 1 1/2	1 1/2	1 1/2	1 1/8
9839-292	2 1/2 x 2	1 15/16	7/8	1 9/16
9839-338	3 x 2	1 15/16	1	1 5/8
9839-420	4 x 2	1 15/16	15/16	1 9/16
9839-422	4 x 3	2 5/32	17/32	1 23/32



Cap

Part No	Size (in)	L	S*
9847-005	1/2	1 7/32	7/8
9847-007	3/4	1 3/8	1 3/32
9847-010	1	1 9/16	1 3/16
9847-012	1 1/4	1 25/32	1 5/16
9847-015	1 1/2	2	1 13/32
9847-020	2	2 3/32	1 1/2
9847-025	2 1/2	2 21/32	1 7/8
9847-030	3	2 23/32	2
9847-040	4	3 1/8	2 11/32
9847-060	6	4 15/16	3

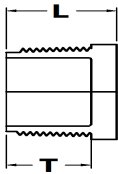
*S dimension is a measurement of a blended radii



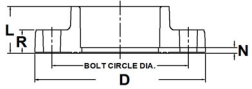
Cap

Part No	Size (in)	L	T
9848-002	1/4	15/16	5/8
9848-003	3/8	15/16	19/32
9848-005	1/2	1 7/32	29/32
9848-007	3/4	1 3/8	1 1/32
9848-010	1	1 9/16	1 5/32
9848-012	1 1/4	1 3/4	1 1/4
9848-015	1 1/2	2	1 7/16
9848-020	2	2 3/32	1 1/2
9848-030	3	2 15/16	1 15/16
9848-040	4	2 1/2	1 21/32

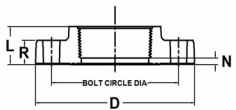
SCH 80 CPVC



Plug			
Part No	Size (in)	L	T
9850-002	¼	13/16	19/32
9850-005	½	1 1/32	25/32
9850-007	¾	1 1/16	13/16
9850-010	1	1 1/4	1
9850-012	1¼	1 11/32	1 1/32
9850-015	1½	1 3/16	7/8
9850-020	2	1 13/32	1 3/32
9850-030	3	2	1 5/8
9850-040	4	2 5/32	1 25/32

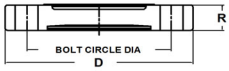


Flange (Solid Style)						
Part No	Size (in)	D	L	N	R	Bolt Circle Dia.
9851-005	½	3 1/2	1	1/8	7/16	2 3/8
9851-007	¾	3 7/8	1 5/32	1/8	1/2	2 17/32
9851-010	1	4 9/32	1 9/32	1/8	19/32	3 3/32
9851-012	1¼	4 21/32	1 13/32	3/16	21/32	3 15/32
9851-015	1½	5	1 17/32	1/8	11/16	3 13/16
9851-020	2	6 1/16	1 23/32	3/16	13/16	4 3/4
9851-025	2½	7	2	3/16	7/8	5 1/2
9851-030	3	7 15/32	2 1/8	1/4	1	6
9851-040	4	8 31/32	2 1/2	1/4	1	7 15/32
9851-060	6	11	3 7/16	7/16	1 9/32	9 15/32



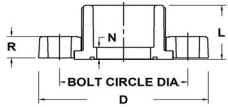
Flange (Solid Style)						
Part No	Size (in)	D	L	N	R	Bolt Circle Dia.
9852-005	½	3 1/2	15/16	3/16	7/16	2 3/8
9852-007	¾	3 7/8	15/16	1/8	1/2	2 3/4
9852-010	1	4 1/4	1 1/8	1/8	9/16	3 1/8
9852-012	1¼	4 5/8	1 3/8	17/32	23/32	3 1/2
9852-015	1½	5	1 3/16	3/16	23/32	3 7/8
9852-020	2	6	1 1/4	3/16	3/4	4 3/4
9852-030	3	7 1/2	1 7/8	1/4	1	6
9852-040	4	9	2	1/4	1 1/4	7 1/2

SCH 80 CPVC



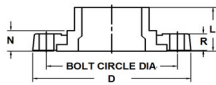
Flange (Blind)

Part No	Size (in)	D	R	Bolt Circle Dia.
9853-015	1½	5	11/16	3 7/8
9853-020	2	6	3/4	4 3/4
9853-030	3	7 1/2	7/8	6
9853-040	4	9	1 1/8	7 1/2
9853-060	6	11	1 1/4	9 1/2
9853-080	8	13 1/2	1 7/16	11 3/4



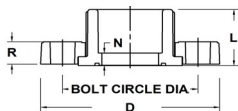
Flange (Loose Ring) - S

Part No	Size (in)	D	L	N	R	Bolt Circle Dia.
9854-005	½	3 1/2	1 1/32	1/8	9/16	2 3/8
9854-007	¾	3 7/8	1 5/32	1/8	9/16	2 3/4
9854-010	1	4 1/4	1 3/8	1/8	11/16	3 1/8
9854-012	1¼	4 5/8	1 7/16	1/8	11/16	3 1/2
9854-015	1½	5	1 19/32	1/8	3/4	3 7/8
9854-020	2	6	1 3/4	3/16	13/16	4 3/4
9854-025	2½	7	2 1/16	3/16	1	5 1/2
9854-030FT	3	7 5/8	2 1/8	3/16	1 1/16	6
9854-040FT	4	9 3/32	2 1/2	1/4	1 1/4	7 15/32
9854-060FT	6	10 15/16	3 1/4	1/4	1 11/32	9 15/32
9854-080FT	8	13 1/2	4 9/16	5/16	1 1/2	11 3/4
9854-100FT	10	16	5 5/8	1/2	1 3/4	14 1/4
9854-120FT	12	19	6 11/16	9/16	1 3/4	17



Flange (Loose Ring)-SPG

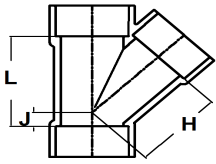
Part No	Size (in)	D	L	N	R	Bolt Circle Dia.
9856-010	1	4 1/4	2 3/16	1 1/32	5/8	3 1/8
9856-012	1¼	4 5/8	2 3/16	15/16	11/16	3 1/2
9856-020	2	6	2 23/32	1 1/4	13/16	4 3/4
9856-040	4	9	4	1 25/32	1 1/8	7 1/2
9856-060	6	11	5 3/32	2	1 3/8	9 1/2
9856-080	8	13 1/2	6 27/32	2 7/8	1 3/4	11 3/4



Flange (Loose Ring)-S

Part No	Size (in)	D	L	N	R	Bolt Circle Dia.
9856-015	1½	4 31/32	1 13/16	13/32	1	3 27/32

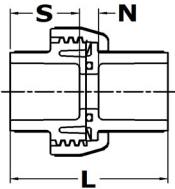
SCH 80 CPVC



WYE

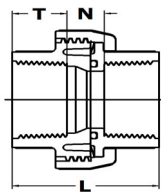
Part No	Size (in)	H	J	L
9875-020	2	2 15/16	5/8	3 5/8
9875-335*	3 X 1	5 25/32	31/32	5 23/32
9875-336*	3 X 1 1/4	5 21/32	31/32	5 23/32

* Assembled from two molded components



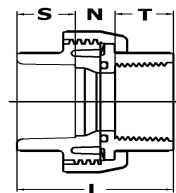
Union (O-Ring Type)

Part No	Size (in)	L	N	S
9897-002	1/4	1 5/8	5/16	5/8
9897-005	1/2	2 1/8	5/16	15/16
9897-007	3/4	2 3/8	1/4	1 1/16
9897-010	1	2 3/4	5/16	1 3/16
9897-012	1 1/4	3	3/8	1 5/16
9897-015	1 1/2	3 1/4	3/8	1 7/16
9897-020	2	3 19/32	7/16	1 19/32
9897-025	2 1/2	4 7/32	25/32	1 3/4
9897-030	3	4 3/8	7/16	1 31/32
9897-040	4	5 3/4	1 1/8	2 9/32



Union (O-Ring Type)

Part No	Size (in)	L	N	T
9898-003	3/8	1 5/8	13/32	5/8
9898-005	1/2	1 15/16	15/32	3/4
9898-007	3/4	2	9/16	23/32
9898-010	1	2 11/32	19/32	7/8
9898-012	1 1/4	2 15/32	5/8	29/32
9898-015	1 1/2	2 17/32	23/32	29/32
9898-020	2	2 29/32	15/16	1



Union (O-Ring Type)

Part No	Size (in)	L	N	S	T
9899-005	1/2	2 5/32	1/2	15/16	23/32
9899-007	3/4	2 11/32	1/2	1 1/16	3/4
9899-010	1	2 13/32	3/8	1 3/16	27/32
9899-012	1 1/4	2 9/16	3/8	1 5/16	29/32
9899-015	1 1/2	3 1/16	11/16	1 7/16	15/16
9899-020	2	3 15/32	27/32	1 19/32	1 1/32
9899-030	3	3 13/16	17/32	1 7/8	1 13/32

